

# Snazz Pixel 3/8

MICRO-PERFORATED GYPSUM BOARD

**Optimum method for large seamless ceilings means using Pixel 3/8 with tapered edges**



Kamat Yatrivas, Bengaluru

Pixel 3/8 offers scope for a flat or curved ceiling design with large, continuous, seamless (non-grid) surfaces. Combined for maximum acoustic control, micro perforations are used, taking the square shape of patterns drilled almost invisibly and subtly into the panel surface for super pleasing aesthetics.

Pixel 3/8 features taper finish edges along the long sides, giving an even and smooth intermediate joint filling between panels.



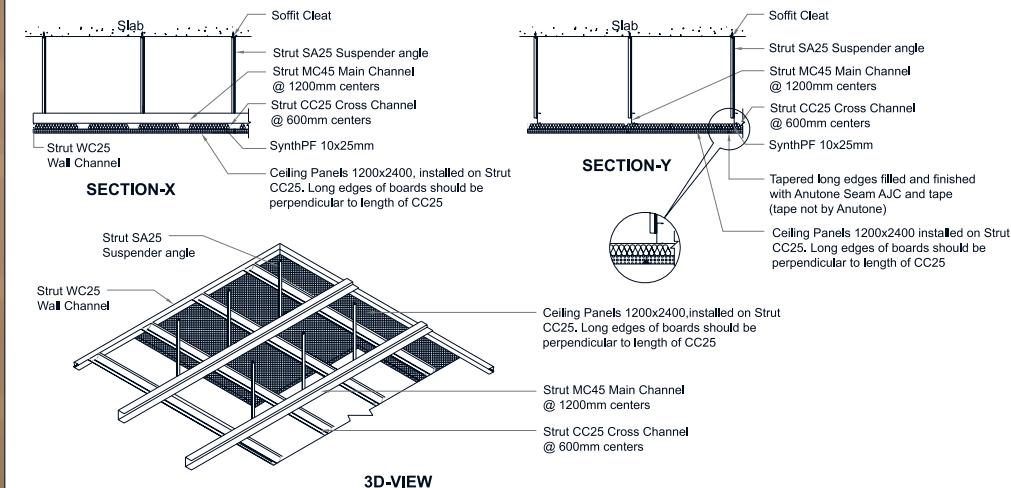
## Technical Summary

Type	Non-Grid
Finish	Plaster
Core	GFR Gypsum
Thickness (mm)	12.5
Size (mm)	1200 x 2400
Density (Kg/m3)	700
Weight (Kg/m2) perfed panel	9
Fire (Class)	1 & P
NRC	upto 0.75
Thermal (W/mk)	na
Climate* (°C, RH)	50, 70
Light (%)	Paint dependant
Green (VoC, RC%)	Low, 25
Warranty (Years)	5
Maintenance	Brush, Repaint, Vacuum

## Applications

Offices, Malls, Clubs, Stadiums, Hotels, Restaurants, Education, Auditoriums, Hospitals, Worship Spaces, Courts, Legislative Assemblies, Secretariats, Airports, Railway Stations, Bus Stands, Home Theatres

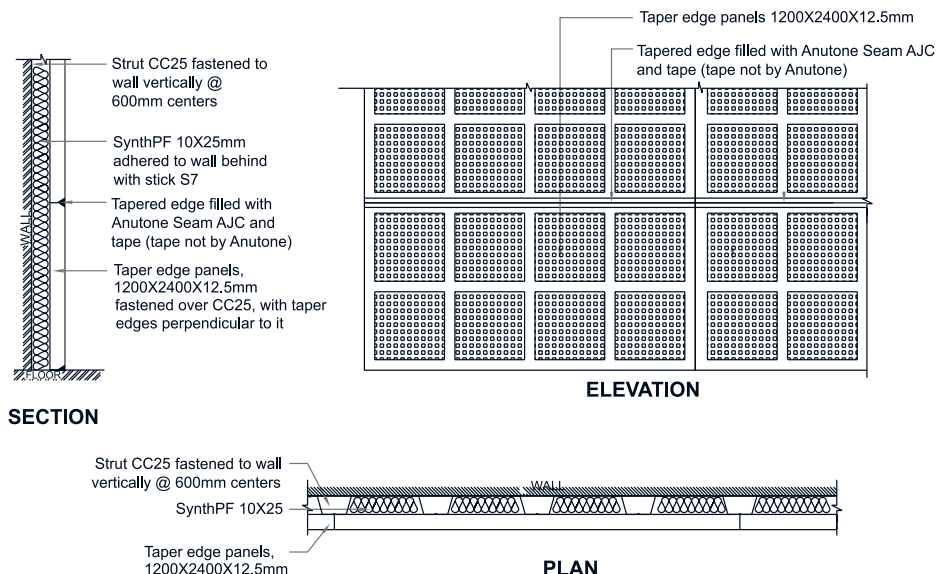
*\*Upto RH90 with closer spanning of CC25 at 300/400mm centres*



NOTE:- FOR RH UPTO 70, SPACING OF STRUT CC25 SHOULD BE @ 600MM CENTERS.  
 FOR RH70 - RH90, SPACING OF STRUT CC25 SHOULD BE @ 400MM CENTERS.  
 FOR MORE THAN RH90, SPACING OF STRUT CC25 SHOULD BE @ 300MM CENTERS.

(\*) - Pixel Smery, Pixel 3/8, Pixello 3/8, Snazz Ellipse

### TAPER EDGE PANELS\* 1200x2400x12.5mm, INSTALLED ON STRUT CC25 SEAM AJC AND SYNTHPF BACKING



# anutone®

Acoustics Drywalls Ceilings Panelling

## ANUTONE ACOUSTICS LIMITED

3A Visvesvaraya Industrial Area, Mahadevpura, Bangalore 560 048, India

Phones +9180 4084 3737, 2520 2803, 2520 3114 info@anutone.com

Amdavad • Bhopal • Bhubaneswar • Chandigarh • Chennai • Coimbatore • Dehradun  
 Delhi NCR • Goa • Guwahati • Hyderabad • Jaipur • Kochi • Kolkata • Lucknow • Mumbai  
 Nagpur • Patna • Pune • Raipur • Rajkot • Ranchi • Surat • Vadodara • Visakhapatnam

Toll Free 1800 103 5505 (9.30am - 6.30pm Mon-Fri)

www.anutone.com

ISO 9001:2015  
 ISO 14001:2015  
 OHSAS 18001:2007

Anutone® is a registered trademark of Anutone Acoustics Limited. Specs are subject to change due to continuous improvement programmes at Anutone®. Contents under copyright registration.  
 No part of this brochure may be reproduced, stored in a retrieval system, scanned or transmitted in any form or by any means electronic, photocopying, recording or otherwise, without the prior written permission of Anutone®.

Document # 815010